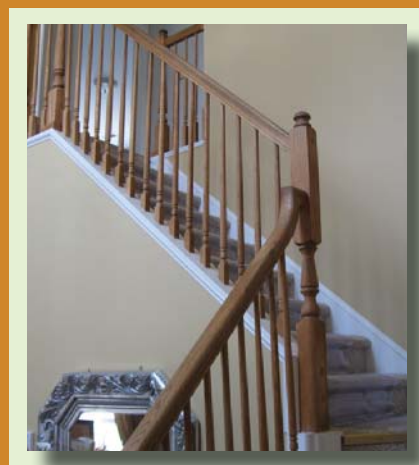




# 2010-2011 PRODUCT GUIDE



 **carolina  
building solutions**  
Innovative Homebuilding Systems

***Builder Signature  
Collection***

# INDEX

Contents	
Brushed Nickel Lighting Package - Standard	•3
Oil Rubbed Bronze Lighting Package - Optional	•4
Siding and Shutters	•5
Season's Solid Core Siding	•6
Board & Batten Accent Siding	•6
Standard 30 Year Architectural Shingle Selection	•7
Window Selections	•8
Exterior Door Selections	•9
Interior and Exterior Locksets	•10
Standard Vinyl Tiles	•10
NAFCO Luxury Vinyl Tile	•11
Shenandoah Laminate Flooring	•11
Standard and Optional Carpet	•12
Fire Place Surround Options	•13
Moulding Selections	•13
Designer Shelving and Accessories	•13
Glass Pantry Doors	•13
Standard Merillat Cabinet Selections	•14
1st Upgrade Merillat Cabinet Selections	•14
2nd Upgrade Merillat Cabinet Selections	•14
3rd Upgrade Merillat Cabinet Selections	•15
4th Upgrade Merillat Cabinet Selections	•15
Kitchen Counter Top Edge and Backsplash	•15
Self Edge Laminate - Kitchen and Bath Countertops	•16
Deep Star High Definition Laminate	•16
Granite Countertops	•16
Solid Surface Countertops	•17
Upgrade Sink and Kitchen Faucets	•17
Cultured Marble Vanity Tops	•17
Faucet Selections	•18
Refrigerator Selections	•19
Range & Cook-top Selections	•20
Wall Oven and Microwave Selections	•21
Dishwashers	•22
Appliance Packages	•22
Disposal	•22

**Small Bath Bar**



**Medium Bath Bar**



**Large Bath Bar**



**Bedroom/Hall**



**2-Story Stairwell**



**Open Vault Foyer**



**Breakfast Nook**



**Dining Chandelier**



**Optional - Mini Pendant**



**Exterior**



**Small Bath Bar**



**Medium Bath Bar**



**Large Bath Bar**



**Bedroom/Hall**



**2-Story Stairwell**



**Open Vault Foyer**



**Breakfast Nook**



**Dining Chandelier**



**Optional - Mini Pendant**



**Exterior**



**4/4 Dutch Lap (Standard)**



**Beaded Lap (Optional)**



**4/4 and Beaded  
Available Colors**



**Optional Rough Sawn Cedar  
Vinyl Accent Siding**



**Available Colors**



**Standard Panelled Shutter  
Selections**



**Optional Siding 4/4 -  
Shadow Ridge Premium  
(Available w/ White corner posts only)**

**Available Colors**



**Optional** Seasons™ High Performance Insulated Double 7/7 Siding

Optional 4-1/2 White Vinyl Corner Posts  
Optional 3-1/2 White Vinyl Window Trim  
All Accessories "White" Only



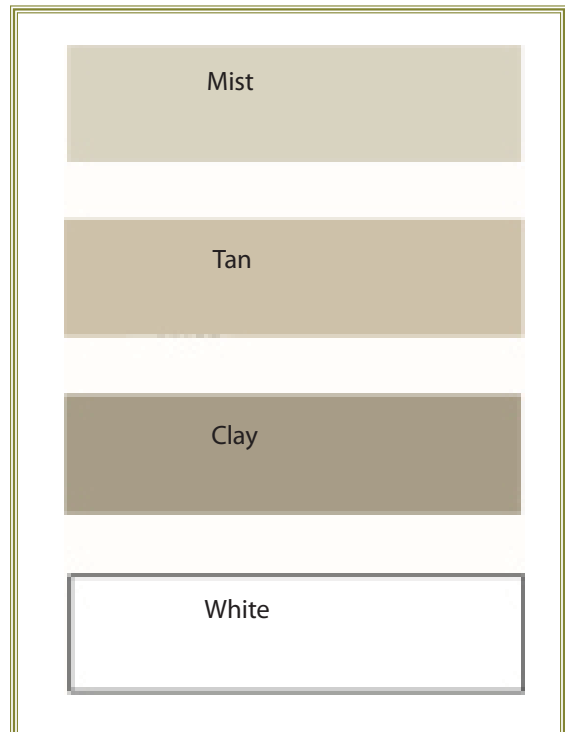
**Optional** Board & Batten  
Vinyl Siding  
(NOT SOLID CORE)



**Board & Batten Accent Siding**



Available Color Selections





**Weathered Wood**



**Rustic Evergreen**



**Autumn Brown**



**Rustic Black**



**Thunderston Grey**



Standard Single Hung



Single Hung  
outside

**Optional** Double Hung



Double Hung  
Outside

**Optional** Sliding Patio



Inside



Single Hung  
Inside



Double Hung  
Inside



Outside

Beige

**Optional** - Beige available

**CLASSIC SINGLE HUNG**

**VINYL**  
WINDOW

**STANDARD FEATURES**

- Classic brick mould profile provides an authentic sculptured appearance that matches traditional exterior millwork
- Interior and exterior accessory grooves allow for easy accessory application
- Bottom sash tilts in and removes for safe and easy cleaning of exterior glass
- Weather-tight dual action sash lock provides security while sealing out the weather and sealing in your comfort
- Energy-efficient warm edge insulating glass for enhanced energy efficiency
- Low-profile sill nosing resembles a traditional wood window
- Integral nailing fin with welded corners for simple and accurate installation
- Maintenance-free multi-chamber PVC construction with fusion welded corners for durability, weather-tight performance and beauty
- Robust interlock satisfies forced entry requirements and improves structural performance
- Integral 1/2" sliding pocket with undersill trim leg allows for simple and secure siding installation

Maximize the performance and the value with our Classic vinyl single hung windows. Twin and triple units can be ordered in an integral multi design with a continuous head and sill for a cleaner appearance. Choose from a variety of shapes including operating true radius, operating arch and operating uneven leg arch.

**A** Maintenance-free multi-chamber PVC construction with fusion welded corners for durability and weather-tight performance

**B** Robust interlock satisfies forced entry requirements and improves structural performance

**C** Integral 1/2" sliding pocket with undersill trim leg allows for simple and secure siding installation

**LOW E GLASS**

**HP GLASS**

**DP 50**

**10 YEAR WARRANTY**

**CLASSIC DOUBLE HUNG**

**VINYL**  
WINDOW

**STANDARD FEATURES**

- Classic brick mould profile provides an authentic sculptured appearance that matches traditional exterior millwork
- Interior and exterior accessory grooves allow for easy accessory application
- Both sash tilt in and remove for safe and easy cleaning of exterior glass
- Weather-tight dual action sash lock provides security while sealing out the weather and sealing in your comfort
- Energy-efficient warm edge insulating glass for enhanced energy efficiency
- Low-profile sill nosing resembles a traditional wood window
- Integral nailing fin with welded corners for simple and accurate installation
- Maintenance-free multi-chamber PVC construction with fusion welded corners for durability, weather-tight performance and beauty
- Robust interlock satisfies forced entry requirements and improves structural performance
- Integral 1/2" sliding pocket with undersill trim leg allows for simple and secure siding installation

Our Classic vinyl double hung windows are taking quality and value to a whole new level. They come with a convenient tilting sash system that allows for easy cleaning. Integral multi are available on twin and triple units providing a continuous head and sill for a sleeker appearance and enhanced performance.

**A** Maintenance-free multi-chamber PVC construction with fusion welded corners for durability and weather-tight performance

**B** Robust interlock satisfies forced entry requirements and improves structural performance

**C** Integral 1/2" sliding pocket with undersill trim leg allows for simple and secure siding installation

**LOW E GLASS**

**HP GLASS**

**10 YEAR WARRANTY**

1. Available option. 2. HP glass option combines Low E with argon gas fill for high performance.

**KOMFORT WITH FIBERGLASS DOORS**

- Doors provide the look of wood with the strength of steel and the superior performance of fiberglass
- High Impact compression molded fiberglass reinforced door skins will not splinter, dent, warp, rot or rust
- Full length composite stiles and rails provide strength and seal out moisture



**SYSTEM 25**

25 Year System Warranty  
10 year glass warranty  
5 Year Paint Warranty



**6-Panel**

**2-Lite**

**Oval Leaded Glass**



**Tilt-Blind**

**Side Lights**



**9-Lite**

**15-Lite**



**Sunburst**



**Internal Grills**

We offer standard door glass in classic internal muntins: allowing easy cleaning with the classic muntin appearance.

Machines and finishes just like wood.



Finger jointed composite material to wood creates a perfect fit & maintains the structural integrity of the frame

Eliminates call backs for rot

Lifetime warranty against rot or insect damage

Composite bottom will not wick or absorb water.



Standard Satin Nickel  
Interior and Exterior  
Door Knob



**Optional**  
Satin Nickel Interior Lever



**Optional**  
Aged Bronze Interior Lever



**Optional**  
Aged Bronze or Satin Nickel  
Exterior Thumbblatch



**Standard Brookstone Vinyl Tiles**



Smoked Pearl  
CH40P



Cashew  
CH400Z



Tobacco  
CH402Z



Sundance  
CH21P



Mica  
CH20P



Sandstone  
CH660P

**OPTIONAL** 12"x12" Vinyl Tiles

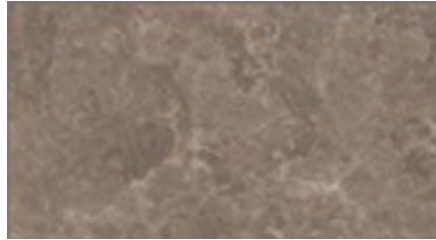


Cannot be mixed between Series

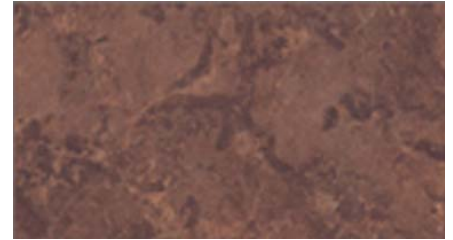
22 - Volcanic Gold



24 - Pewter



21 - Noce



**Modena Marble**

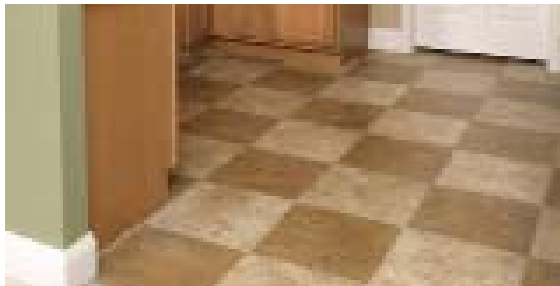
NV - 791 - Pearl Beige



NV - 178 - Dover White



**Navona Stone**



Checker Board Patterns Available

34 - Mercury



**Appalachian Slate**

**Shenandoah Laminate Flooring**



Where Great Floors Begin

**OPTIONAL**



Sable -758



Goldenrod -261

**25 Oz. Lassiter- Standard**



Candlewick - 100



Flax - 102



Deerskin - 103



Coffeehouse -704

**25 Oz. Textured Comfort  
OPTIONAL**



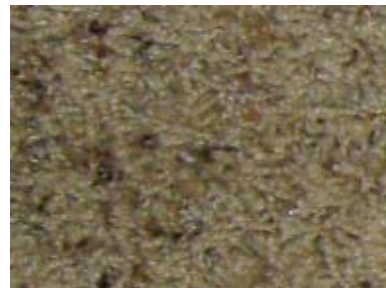
Rice - 100



Leather - 102



Sand - 103



Desert - 105

**39 Oz. Atwood  
OPTIONAL**



Chenille- 101



Biscuit - 103



Wild Rice - 105



Briarwood - 704



**Shaw Green Edge**

This Shaw carpet is constructed of Nylon 6, a recyclable carpet fiber. Carpets made of this fiber are capable of being returned to carpet production. Shaw has developed a program to recycle Nylon 6.



R2X Soil and Stain Resistant.

This carpet features Shaw's R2x combined soil and stain resistance system, a patented treatment that offers a 5-year warranty against soiling and liquid spills

**STANDARD Selections**



5-1/4 Base Moulding



2 1/4 Case Moulding



6- Panel Interior Door

**OPTIONAL Selections**



5" Ceiling Crown



3-1/4 Casing



Cheyenne Interior Door

**OPTIONAL Fire Place Surround Options**

For Ventless Gas Fireplaces - Natural or LP



Canyon Mesquite Stone with  
Wood Mantle



Three Sided on Raised  
Platform with Ceramic Tile



Savannah White with  
Tile Inset and Upper Decor  
Frames (Choice of Three  
Tile Colors).

**OPTIONAL Glass Pantry Doors**



2/4x6/8



2/4x8/0

**Designer Shelving and Accessories**

**OPTIONAL**

Made from the finest ash available, our designer line offers the ultimate material difference, This handcrafted wood shelving includes a wide variety of standards including 12" ventilated shelving with natural wood finish.



**Builder Signature  
Collection**

Milbridge Oak

Square Cider



Square Medium



**Standard Merillat Cabinet Selections**

Sundale Maple

Square Toffee



Square Paprika



**Optional**

**1st Upgrade Merillat Cabinet Selections**

Spring Valley Maple

Square Sable



Square Sedona



Square Natural



Square Toffee



Spring Valley Oak

Square Medium



Square Natural



**Optional**

**2nd Upgrade Merillat Cabinet Selections**

Seneca Ridge Maple-Square or Arch

Sable



Toffee



Sedona



Seneca Ridge Oak -Square or Arch

Natural



Cider



Medium



Antique Brushed Nickel Knob- All Cabinets



Arbor Falls Laminate



**3rd Upgrade Merillat Cabinet Selections**

**Optional**

Avenue Maple

Sutton Cliffs Hickory

Square Natural

Square Toffee

Square Sable

Square Hickory Cider

Square Natural



**Optional**

Sutton Cliffs Cherry  
Square and Arch

Antique Brushed Nickel Knob-  
All Cabinets

Cherry Paprika



**4th Upgrade Merillat Cabinet Selections**

LaBelle Mable Glaze

Artisan Bronze



**Optional**

**Kitchen Counter Top Edge and Backsplash**



Marrone Chiaro  
SL83



Cremora Caffè  
SL82



Nubi Bianche  
SL81



Tile Top Edging  
(Available in Three  
Colors)

**Standard**

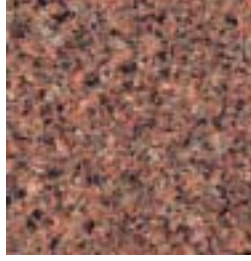
Graphite Nebula  
4623-60



Bronzed Fusion  
1796-07



Mesa Sunrise  
4571-07



Milano Brown  
4725-52



Milano Mahogany  
4728-52



Milano Amber  
4724-52



Crystal Fusion  
1793-07



Amber Fusion  
1794-07



**Optional**

**Deep Star High Definition Laminate**

With Matching Beveled Edge

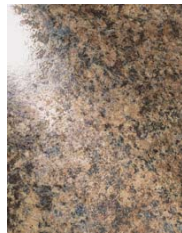
Sedona Trail  
1826-35



Sedona Spa  
1825-35



Bella Capri  
1822-35



Bella Noche  
1820-35



Bronze  
1814-35



Glaze  
1813-35



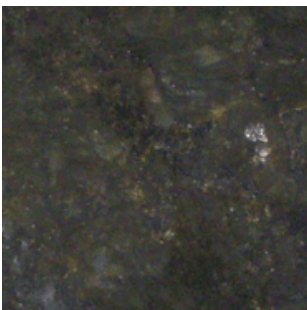
Beveled Edge



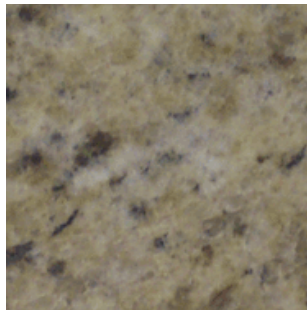
**Optional**

**Granite Countertops**

Uba-Tuba



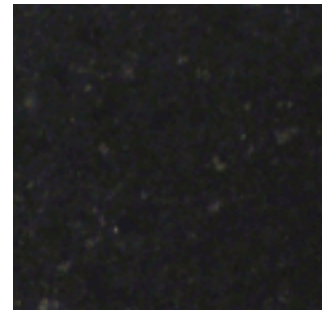
Giallo Ornamental



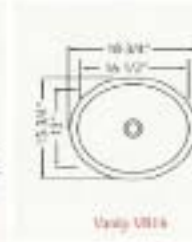
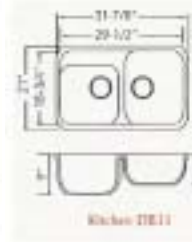
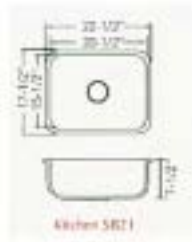
Tan Brown



Absolute Black



**Optional**



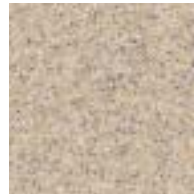
Colors



Portland



Alleghany



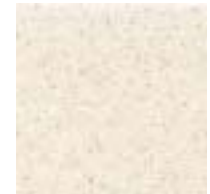
Bay Sand



Denali



Desert Pebble



Dune Sand



Green Pebble



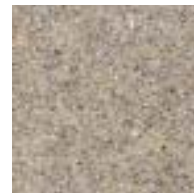
Grey Pebble



Malibu



Marine



Piedmont



Montauk

**Optional**

**Upgrade Sink and Kitchen Faucets**



Brushed Nickel or Oil Rubbed Bronze  
Faucets  
Pullout Sprayer



Swanstone White

**Optional**

**Cultured Marble Vanity Tops**

K-82 White/White



A-10 White/Natural



K-314 Ecru (Premium)



**Standard  
Brushed Nickel**



Lav Faucet



Deck Tub Faucet



Tub and Shower  
Faucet



Kitchen Faucet  
with Sprayer



**Optional  
Brushed Nickel**



Lav Faucet



Deck Tub Faucet



Tub and Shower  
Faucet

**Optional  
Oil Rubbed Bronze**



Lav Faucet



Deck Tub Faucet



Tub and Shower  
Faucet



**Optional**

**GE 22 Cu. Ft. Side by Side Refrigerator**

- GSH22JSXSS - Stainless
- GSH22JFXWW - White
- GSH22JFXBB - Black



**External temperature controls with child lock and UltraFlow64** Adults can control the temperature and dispense 64 ounces of filtered water per minute

**Adjustable-humidity crisper drawers** Adjustable humidity controls keep fresh produce fresh

**Adjustable temperature deli drawer** Help keep meats and cheeses delicious and ready to eat

**Snack drawer** Conveniently stores favorite foods and allows for quick, easy access

**Adjustable gallon door bins** Offers ideal space for storing gallon containers in the door

**Adjustable spillproof glass shelves** Raised edges keep small spills from becoming big messes

**Optional**

**GE 22.7 Cu. Ft. Side by Side Counter Depth**



- GSCS3PGXSS - Stainless
- GSCF3P6XWW - White
- GSCF3P6XBB - Black

**Counter-depth configuration** - Counter-depth configuration makes it possible to have the look of a built-in without the added expense

**High-gloss finish** - Step up to a smooth look that stands out in any kitchen

**External controls with actual-temperature display and UltraFlow100** - Dispense 100 ounces of filtered water per minute

**Quick Ice™ setting** - Speed up your icemaker to keep up with your life

**Integrated Ice™ system** - Designed to give you more room to store your favorite frozen foods

**TurboCool™ setting** - Restores proper temperature to the refrigerator after frequent door openings

**Integrated shelf support system** - Strong shelf supports add a contemporary look

**Adjustable ClearLook™ door bins** - Store gallon containers with ease in the door and free up valuable shelf space

**In-the-door beverage rack** - Beverages are easy to grab when you're on the go

**Adjustable, slide-out spillproof glass shelves** - Adjustable shelves are designed to make clean up quick and easy

**GE water filtration - one year filter** - Removing impurities means fresh-tasting water for your family

**FrostGuard™ technology** - Controlled defrosting keeps frozen foods from feeling the burn

**Optional**

**GE 25.9 Cu. Ft. French Door Refrigerator**



- GFSS6KKYSS - Stainless
- GFSS6KKYWW - White
- GFSS6KKYBB - Black



**High-gloss crown doors with hidden hinges** - Step up to a smooth finish with rounded doors and the clean look of concealed hinges

**Integrated dispenser** - Enjoy filtered water and a fresh look with a color-matched dispenser

**Freshness Center™** - Maintain the fresh tastes of fruits and vegetables with two humidity-controlled drawers

**ClimateKeeper™ system with dual evaporators** - Separate evaporators create the ideal environments to maintain fresh and frozen foods

**BrightSpace™ interior with GE Reveal® lighting** - It's easy to find tasty

treats under bright, clear interior lighting

**Two-level Slide 'n Store™ system** - Get instant access to frozen foods in large and extra-large drawers

**Adjustable spillproof glass shelves** - Raised edges keep small spills from becoming big messes

**Deluxe quiet design** - Designed to reduce unnecessary sounds in the kitchen



**Optional**

**GE 30" Free-standing Electric Smooth-top Ranges**



JBP66DSMSS - Stainless  
JBP66DMWW - White  
JBP66DMBB - Black

- Self-clean oven** - Self-clean allows you to spare yourself from the trouble and effort it takes to scrub the oven interior
- Super-large oven capacity** - Remarkably large oven interior is ideal for holidays, dinner parties and everyday family cooking
- TrueTemp™ oven system** - This feature helps ensure the temperature you set is the temperature you get, with less variance, to give you the baking and broiling performance you desire
- Dual-size ribbon element** - Two heating elements in one allows you to choose a heating area for your cookware
- Ceramic glass cooktop** - A smooth cooktop surface makes cleaning quick and easy
- QuickSet oven controls** - Electronic touch pads on the control panel make controlling your oven effortless
- Six-pass bake element** - One continuous heating element delivers even heating, unparalleled baking and evenly cooked food
- Big hearth window** - Elegant shaped window makes it easy to monitor the progress of food

**Optional**

**GE 30" Downdraft Electric Cooktop**



PP989SNSS - Stainless  
PP989TNWW - White  
PP989DNBB - Black

- Downdraft exhaust** - Powerful exhaust system helps aim smoke, grease, odors and moisture into the downdraft venting system
- Frameless ceramic glass cooktop** - Attractive cooktop is designed to contain spills and make cleaning quick and easy

- Ribbon heating elements** - Powerful heat beneath the smooth surface provides high-speed warm-up and even heating
- Bridge element** - Combines three cooktop elements into one large cooking area, ideal for griddles and gourmet pans
- 6"/9" PowerBoil™ Element** - Accommodates various size pots or pans and 3,000 watts of power speeds the boiling process
- Three speed downdraft fan** - Three speed fan control helps removes the smoke, grease, odors and moisture created when cooking

**Optional**

**GE 30" Built-In Electric Cooktop**



PP912SMSS - Stainless  
PP912TTMWW - White  
PP912BMBB - Black

- Frameless ceramic glass cooktop** - Attractive cooktop is designed to contain spills and make cleaning quick and easy
- Ribbon heating elements** - Powerful heat beneath the smooth surface provides high-speed warm-up and even heating
- Dual-size ribbon element** - Two heating elements in one allows you to choose a heating area for your cookware

- PowerBoil™ Element** - Accommodates various-size pots or pans and 3,000 watts of power speeds the boiling process
- Dishwasher-safe knobs** - Just place the removable knobs in the dishwasher and you're done
- Heating Element "On" Light** - Illuminates when the cooking surface is activated
- Hot surface indicator lights** - Cooktop lights let you know when the surface is hot
- Simmer setting** - Simmer setting allows for low, even heat distribution for delicate foods and sauces
- Control lock capability** - Control panel locks easily to help avoid accidental operation from curious children or when cleaning

**Optional**

**30" Built-In Double Wall Oven**



**Super-large oven capacity**  
- Remarkably large oven interior is ideal for holidays, inner parties and everyday family cooking

**Self-clean oven** - Self-clean allows you to spare yourself from the trouble and effort it takes to scrub the oven interior

**TrueTemp™ oven system** - Provides even heat distribution and precise oven control

JTP55SPSS - Stainless

JTP55DPWW - White

JTP55DPBB - Black

**Interior oven light** - Bright interior light helps you check on the progress of your cooking

**Eight-pass bake element** - Interior heating element loops eight times to distribute heat quickly and evenly for optimal baking results

**6-Pass Broil Element** - Provides better and more even coverage of the food

**Hidden bake oven interior** - Conceals the lower oven bake element to eliminate hard-to-reach areas that collect food and spills for easy cleaning

**Heavy-duty oven racks** - Tough, durable racks include 50% thicker crossbars for extra strength

**Electronic oven controls** - Electronic pads on the control panel are easy to operate with just a touch

**Two oven racks** - Includes two oven racks that are sturdy and reliable

**Optional**

**30" Built-In Double Microwave/Wall Oven**



**Self-clean oven** - Self-clean allows you to spare yourself from the trouble and effort it takes to scrub the oven interior

**Extra-large oven capacity** - Enough room to cook an entire meal at once

JTP90SPSS - Stainless

JTP90DPWW - White

JTP90DPBB - Black

**Electronic oven controls** - Electronic pads on the control panel are easy to operate with just a touch

**TrueTemp™ oven system** - Provides even heat distribution and precise oven control

**1.6 Cu. Ft. Capacity (Upper Oven Only)** - Provides a large interior to accommodate a variety of cookware, dinnerware and food containers

**Sensor cooking controls (upper oven only)** - Automatically adjusts time and power for delicious cooking results

**Turntable (upper oven only)** - Rotates food throughout the cooking cycle for even cooking results

**Hidden bake oven interior** - Conceals the lower oven bake element to eliminate hard-to-reach areas that collect food and spills for easy cleaning

**Optional**

**1.5 Cu. Ft. Over-the Range Microwave (non-vented)**



**1.5 cu. ft. capacity** - 950 watts (IEC-705 test procedure)

**Convenience cooking controls** - One-touch cooking controls make operation fast and easy

**Auto & time defrost** - Simply enter the weight of the food, and the oven automatically sets the optimal defrosting time and power level or set your desired time for defrosting

**Turntable on/off** - Ideal for even cooking results or for accommodating oversized dishes that may not be able to fully rotate

JNM1541SPSS - Stainless

JNM1541DPWW - White

JNM1541DPBB - Black

**Two-speed, 300-CFM venting system** - One touch quickly removes smoke, steam and odors from the cooktop area

**Removable oven rack** - Full-width cooking rack allows for multi-level cooking simultaneously, allowing you to cook large quantities of your family's Favorites

**10 power levels** - Ten total power levels allow you to customize the wattage to your cooking needs

**Builder Signature  
Collection**

**Dishwashers**

**Optional  
Dishwashers**



- GLD5660RSS- Stainless
- GLD5600RWW - White
- GLD5600RBB - Black

PureClean wash system with 5-stage filtration - Multiple filtration levels ensure clean dishes

ENERGY STAR® Qualified - Meets or exceeds federal guidelines for energy efficiency for year-round energy and money savings

- SaniWash cycle - Special cycle reduces 99.999% of harmful germs and bacteria
- Electronic controls with 5 cycles/5 options - Modern controls make it easy to program the dishwasher
- China/ Crystal cycle - Lower temperatures are ideal for china and delicate dishware
- Deep-tiered white titanium upper rack - Durable racks are designed to resist rust and secure dishes
- QuietPower™57 sound package - 57 dBA - Advanced materials reduce the sound level to just 57 dBA
- 2/4/8-hour Delay Start - Set the time to wash dishes at a later time



**Optional**



GFC520F

- 1/2 Horsepower Motor
- Large Capacity Continuous Feed Disposer
- 2600 RPM Grinding Action
- Stainless Steel Jam Resistant, Dual Swivel Impellers
- EZ Mount Installation
- Direct Wire Power Connection
- Standard Sound Insulation Package
- Cold-Rolled Carbon Steel Armature Shaft Material

- SplashGuard
- Wall Switch with Sink Stopper
- Manual Reset Overload Protector
- Dishwasher Drain Connector
- Stainless Steel Sink Flange
- Galvanized Steel Turntable
- 2 Level Precutter

**Disposal**

**Optional**

**Appliance Packages**



**Stainless Appliance Package**

- Side by Side Refrigerator - GSH22JSXSS
- Free Standing Range - JBP66DSMSS
- 1.5 Cu. Ft. Over the Range Microwave (non-vented) - JNM1541SPSS
- Dishwasher - GLD5660RSS

\*Refrigerator and Dishwasher Energy Star compliant



**White Appliance Package**

- Side by Side Refrigerator - GSH22JFXWW
- Free Standing Range - JBP66DMWW
- 1.5 Cu. Ft. Over the Range Microwave (non-vented) - JNM1541DPWW
- Dishwasher - GLD5600RWW

\*Refrigerator and Dishwasher Energy Star compliant



**Black Appliance Package**

- Side by Side Refrigerator - GSH22JFXBB
- Free Standing Range - JBP99DMBB
- 1.5 Cu. Ft. Over the Range Microwave (non-vented) - JNM1541DPBB
- Dishwasher - GLD5600RBB

\*Refrigerator and Dishwasher Energy Star compliant