

HBS “Preferred” Series



HBS “Preferred” Series

Highlighted Interior Standards

Stainless Steel Kitchen Appliances



Stainless Steel FarmHouse Style Kitchen Sink



Raised Wall Cabinet Over Range



Laminate Kitchen Countertop with Ideal Edging and Full Ceramic Backsplash



Double Trash Can Base Cabinet & Pot and Pan Drawer Base Cabinet



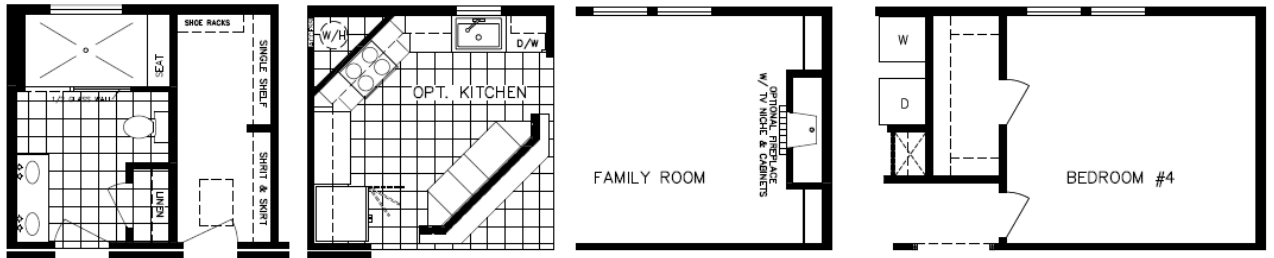
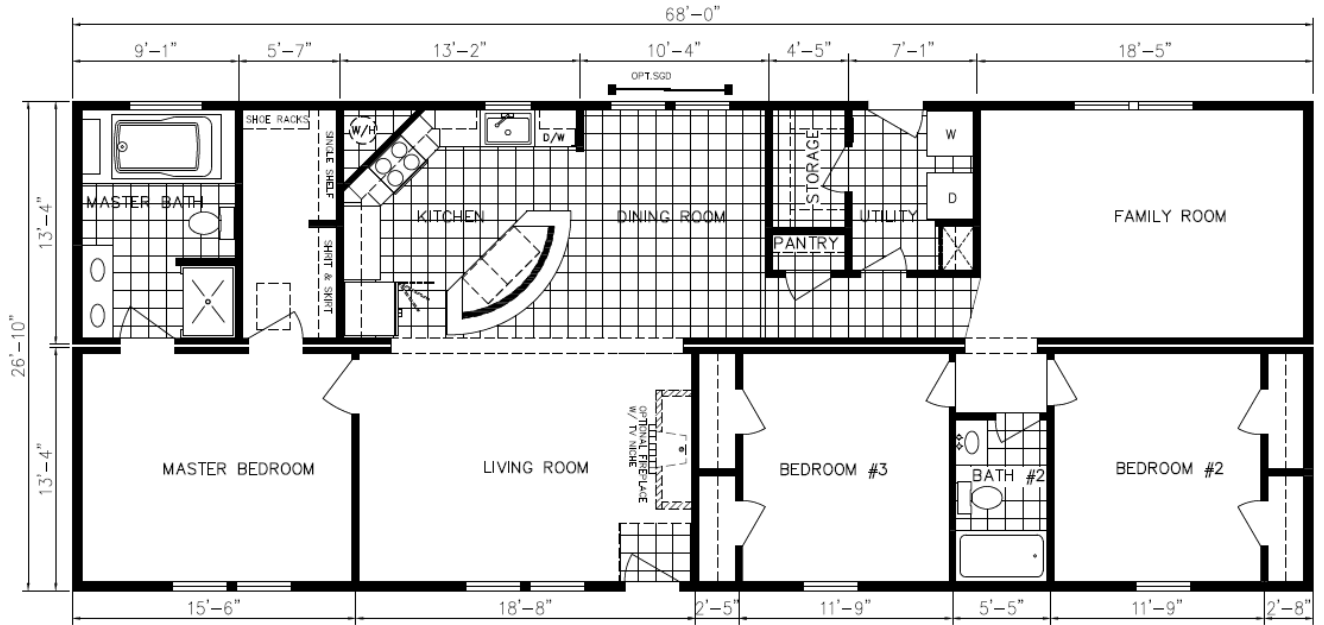
2 Panel Cashel Interior Doors (36” Wide in Master Bedroom, Master Bedroom Closet & Master Bathroom)



Shoe Rack with Shirt & Skirt Shelves in Master Bedroom Closet



HBS “Preferred” Series



OPT.MASTER BATH

Elevation Shown with Optional and On-Site Dealer Supplied Items. Consult Your Salesman for Pricing.



Artist Rendering Entertainment
Center/Fireplace Option.
Consult Your Salesman for Information.

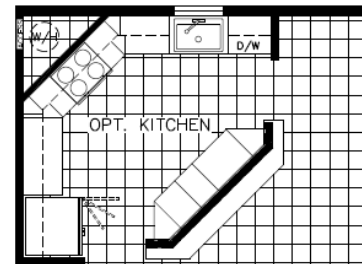
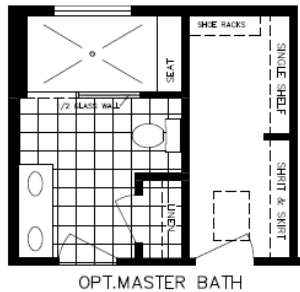
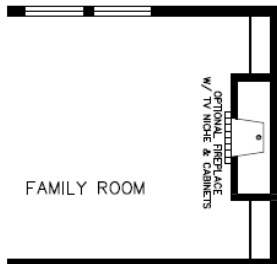
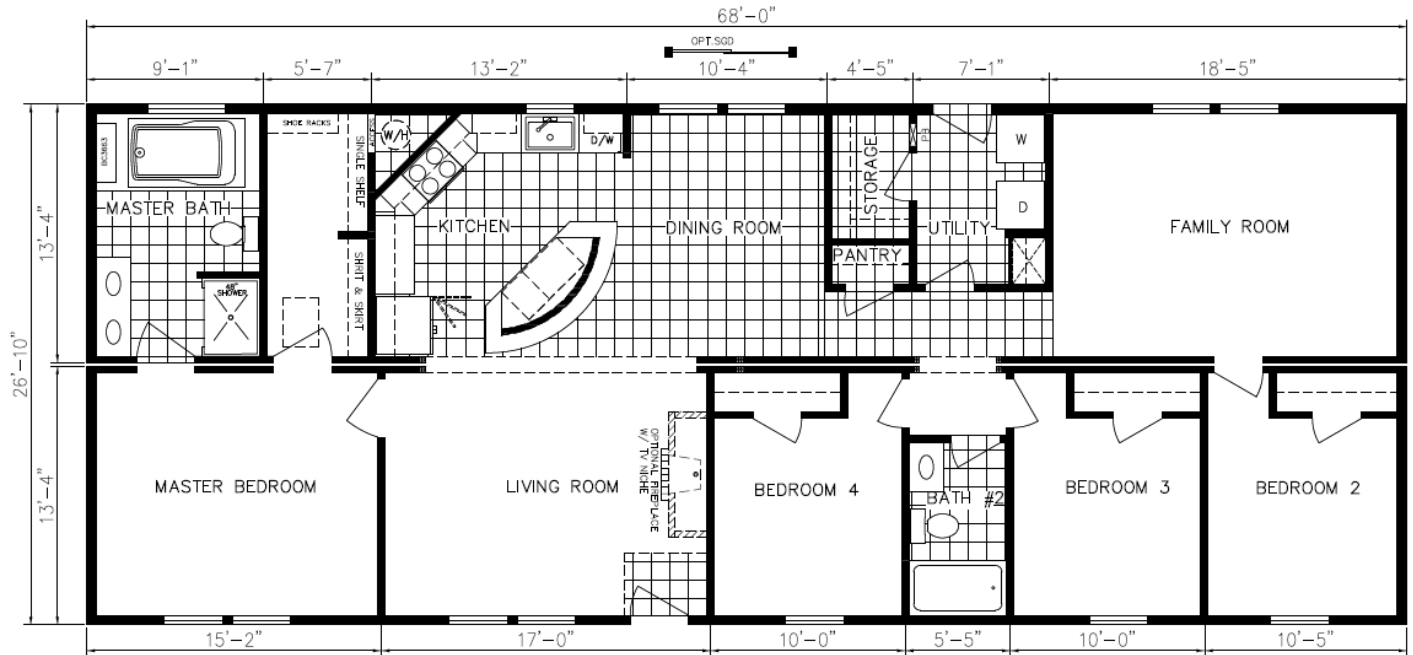


Cypress Point

Model 6828A HBSP R

Approx. 1824 Sq.Ft.

HBS "Preferred" Series



Elevation Shown with Optional and On-Site Dealer Supplied Items. Consult Your Salesman for Pricing.



Artist Rendering Standard Kitchen.
Consult Your Salesman for Information.



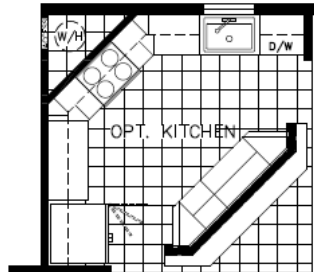
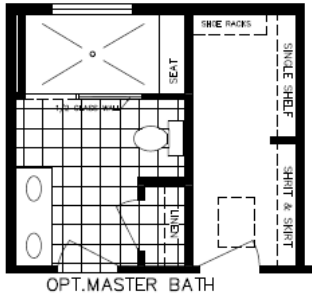
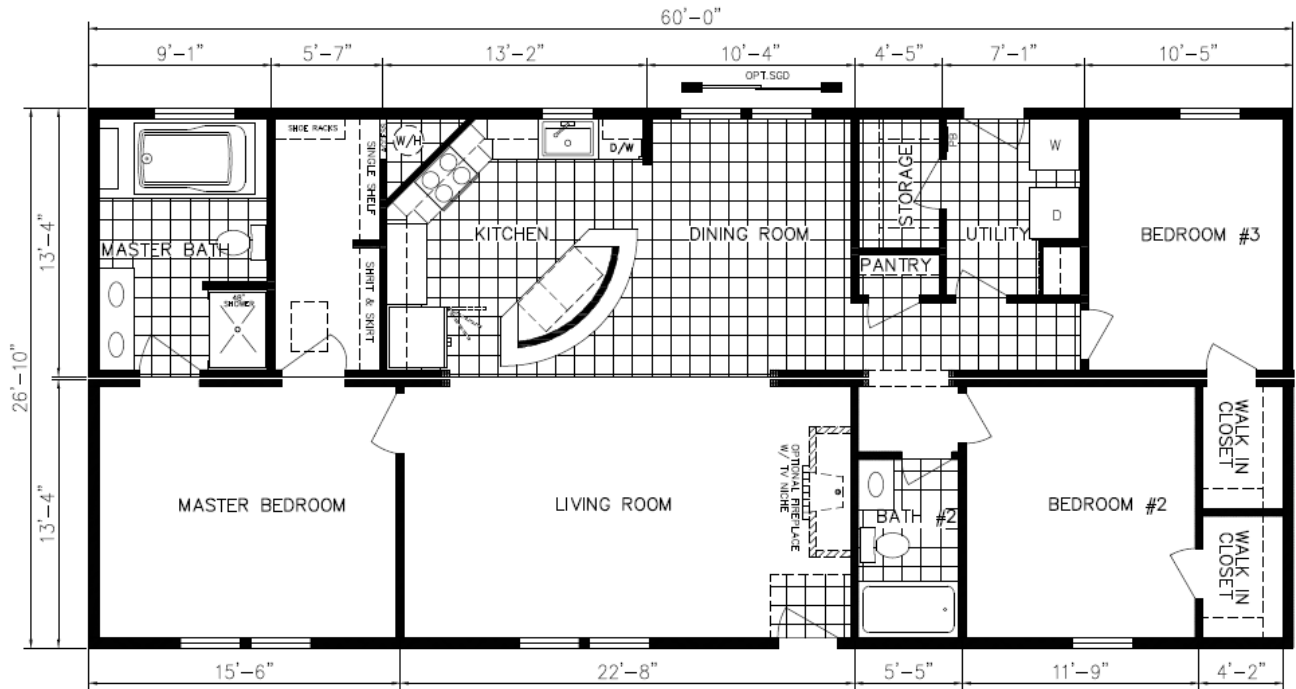
Cypress Point Version 2

Model 6828C HBSP R

Approx. 1824 Sq.Ft.



HBS "Preferred" Series



Artist Rendering Standard Living Room Area.
Consult Your Salesman for Information.



Elevation Shown with Optional and On-Site Dealer Supplied Items. Consult Your Salesman for Pricing.



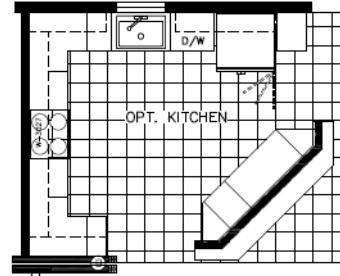
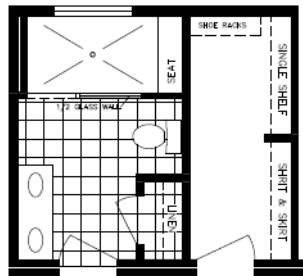
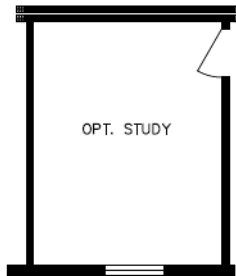
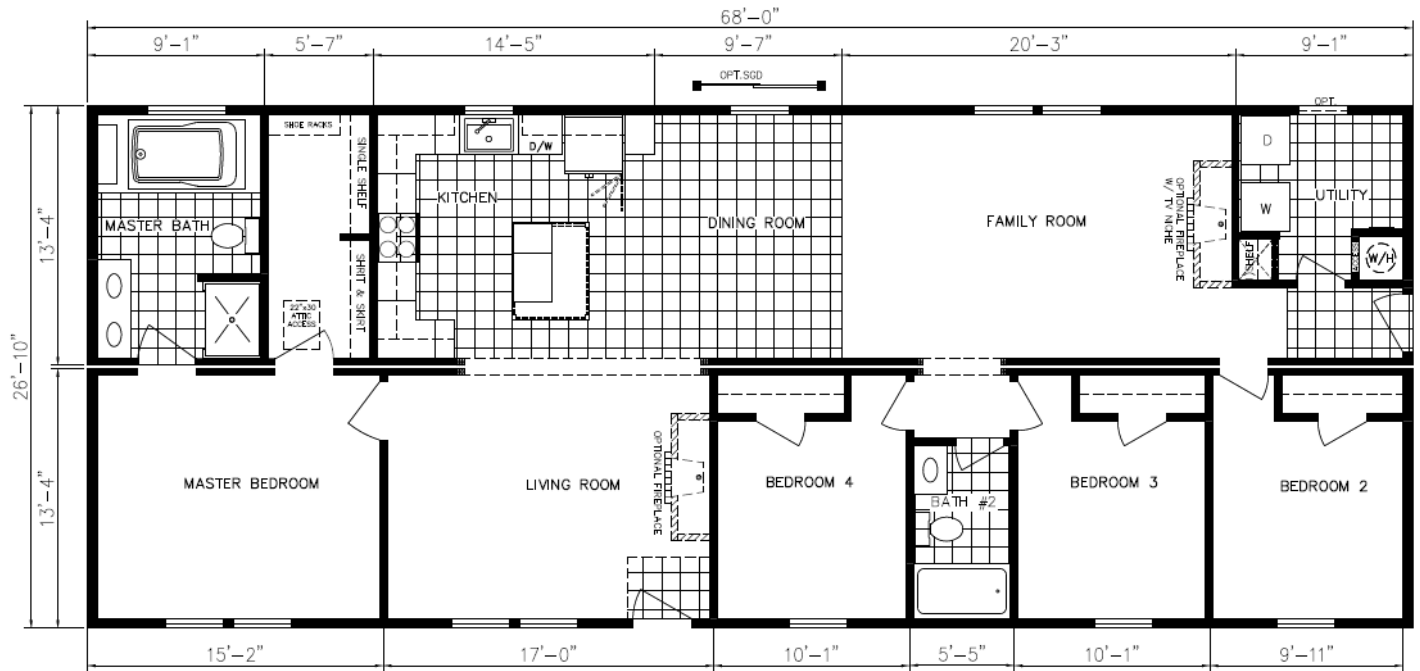
Cypress Point Version 3

Model 6028J HBSP R

Approx. 1610 Sq.Ft.



HBS "Preferred" Series



Artist Rendering Standard Kitchen.
Consult Your Salesman for Information.

Elevation Shown with Optional and On-Site Dealer
Supplied Items. Consult Your Salesman for Pricing.



Oakmont

Model 6828B HBSP R

Approx. 1824 Sq.Ft.

HBS "Preferred" Series



Elevation Shown with Optional and On-Site Dealer Supplied Items. Consult Your Salesman for Pricing.

Artist Rendering Standard Kitchen. Consult Your Salesman for Information.



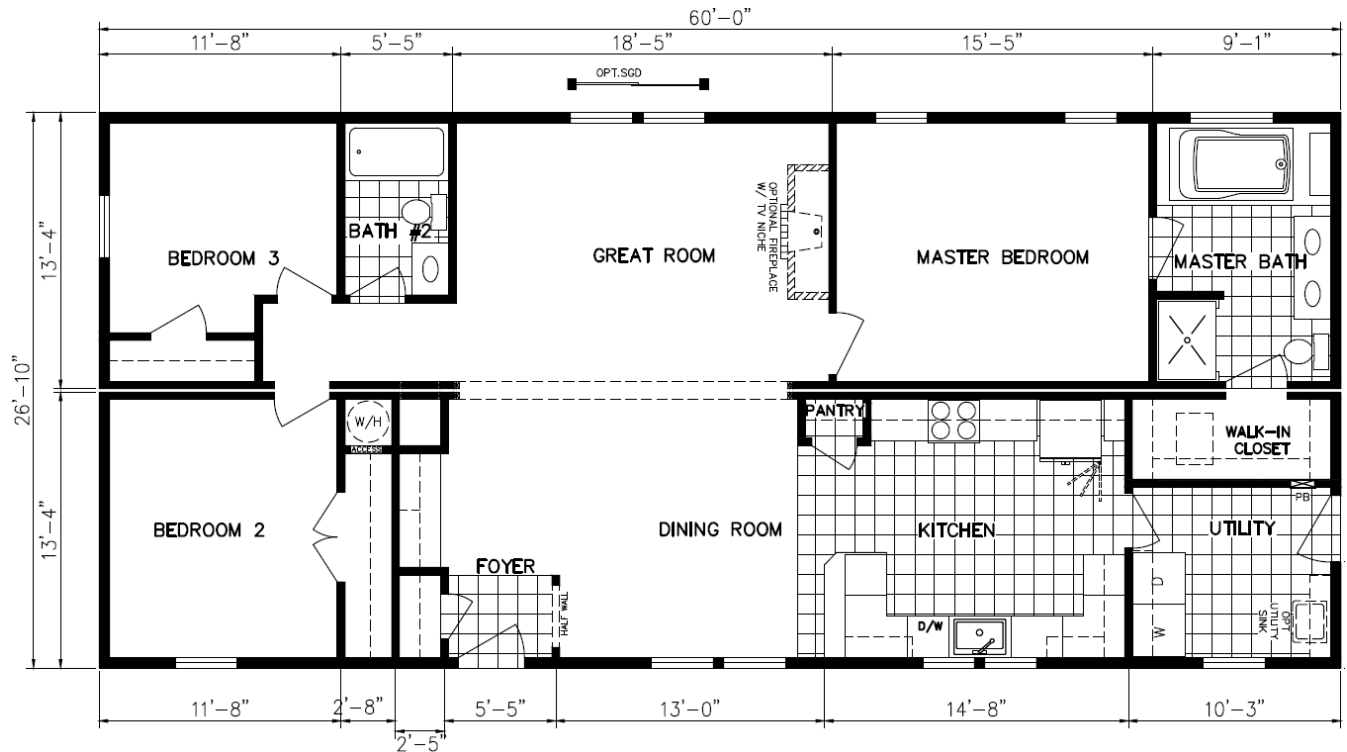
Pebble Beach

Model 6028H HBSP R

Approx. 1610 Sq.Ft.



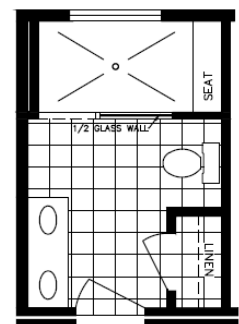
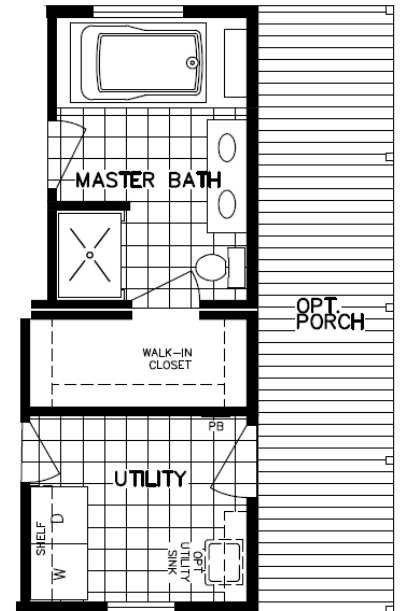
HBS "Preferred" Series



Artist Rendering
Standard Kitchen.
Consult Your Salesman
for Information.



Elevation Shown with Optional and On-Site Dealer
Supplied Items. Consult Your Salesman for Pricing.



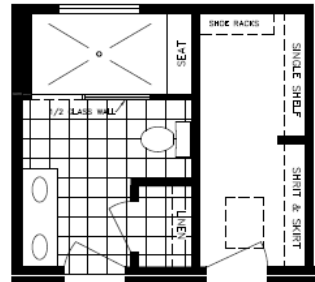
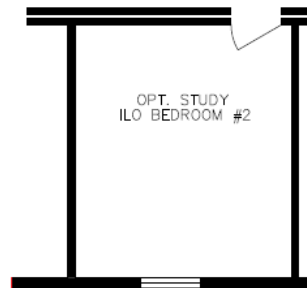
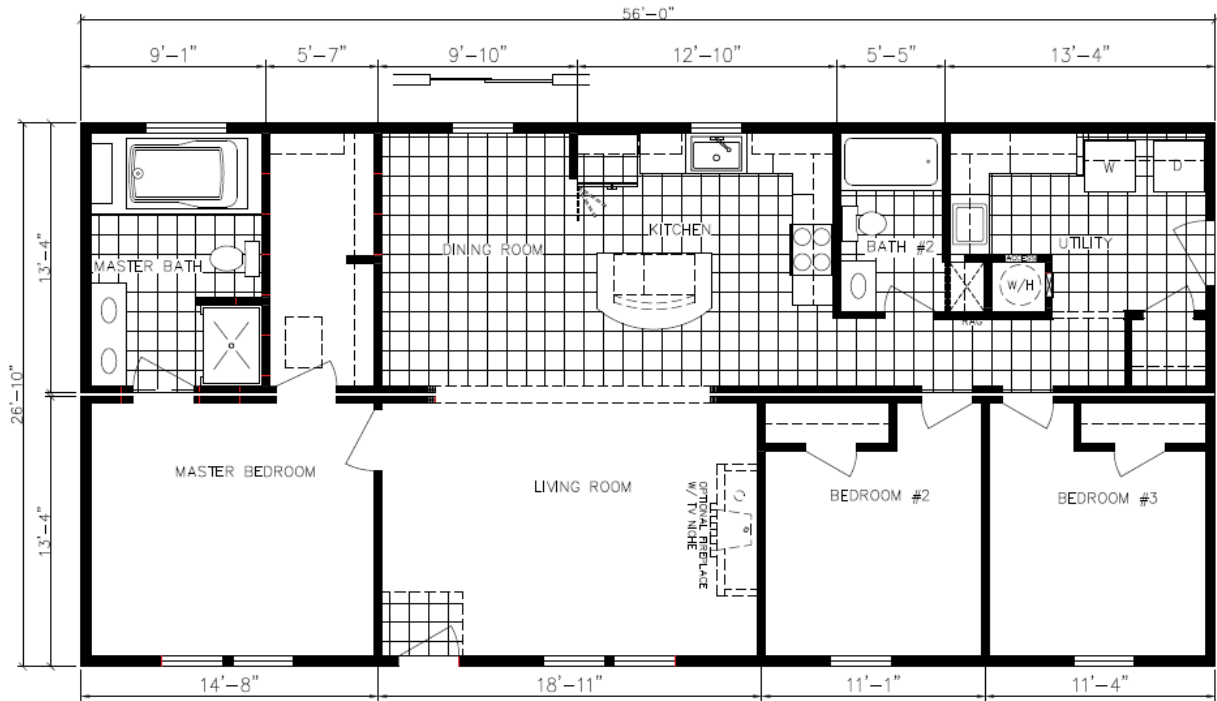
OPT. MASTER BATH



Seminole

Model 6028I HBSP R
Approx. 1610 Sq.Ft.

HBS "Preferred" Series



Elevation Shown with
Optional and On-Site Dealer
Supplied Items. Consult Your
Salesman for Pricing.

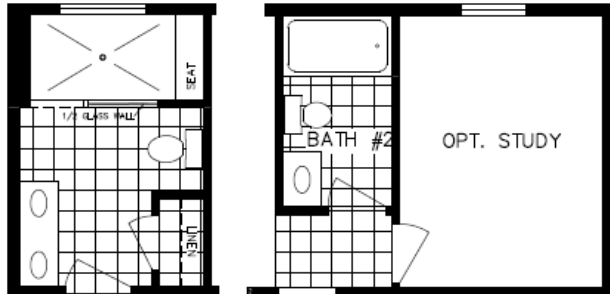
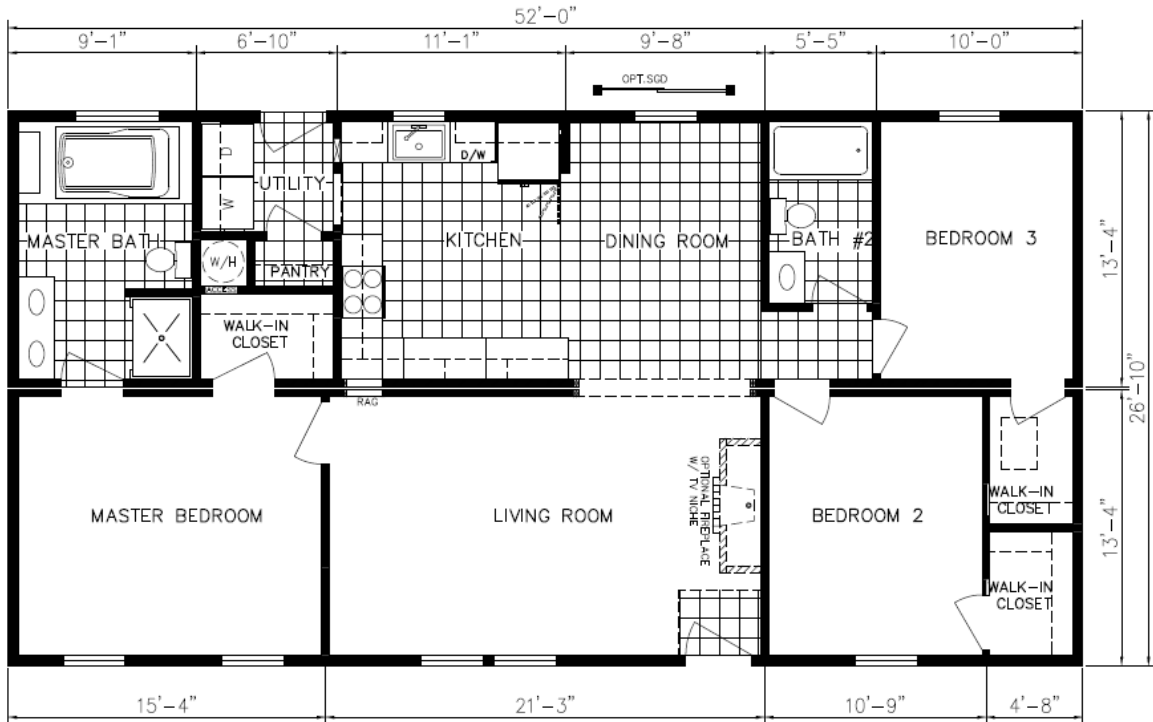


Shadow Creek

Model 5628C HBSP R

Approx. 1503 Sq.Ft.

HBS "Preferred" Series



OPT.MASTER BATH

Artist Rendering Standard Kitchen.
Consult Your Salesman for Information.



Elevation Shown with Optional
and On-Site Dealer Supplied
Items. Consult Your Salesman
for Pricing.



Somerset Hills

Model 5228D HBSP R

Approx. 1395 Sq.Ft.

HBS “Preferred” Series

“Standard Building Specifications”

Structural Features

- R 30 Batt Insulation in Ceilings
- R-19 Insulation in Walls
- R-30 Floor Insulation in Floors
- Wind Zone 110 MPH
- OSB Floor Decking 23/32”
- (2 X 10) Floor Joist 16” OC
- (2 X 6) 8’ Sidewalls 16” OC
- (2 X 6) Top & Bottom Plates
- (2 X 4) 8’ Double Marriage Walls
- Engineered Roof Systems
- 5/12 Roof Pitch

Plumbing

- Water Shut-Off Valves
- Pex Plumbing System
- 50 Gallon Water Heater
- Exterior Frost-Free Water Faucet
(1 @ STD Location Per Plan)
- Whole House Water Shut-Off
- Washer Hook-Up
- Kitchen Pull Out Faucet

Baths

- 48” Fiberglass Shower, M/Bath (Per Plan)
- 60” Fiberglass Tub/Shower, Hall Bath
- 72” Drop-In Tub M/Bath (Per Plan)
- 48”x48” Window over Drop-In Tub
M/Bath (Per Plan)
- Decorator Linen Storage Shelving at
Drop-In Tub (Per Plan)
- Shaker Style Vanity Cabinets Matching
Kitchen Color
- 36” High Lavatory(s) in M/Bath
- 36” High Lavatory in Bath 2
- Towel Bar/Tissue Holder All Baths
- Dual Lever Bath Faucets
- Cultured Marble Lavatories in Baths
- 6” Ceramic Backsplash on Laminate
Tub Platforms

Exterior Features

- D5 Royal Vinyl Siding
- 15” Raised Panel Shutters or 3 ½”
Window Lineals (Front Door Side)
- 7/16” OSB Wrap Exterior Walls
- 36” 6 Panel Front Door w/No Storm
- 36” 6 Panel Rear Door w/No Storm
(Per Plan)
- 12” Eave Overhangs (All Sides)
- Insulated Windows w/ 3 over1 Grids
or Gridless
- House Wrap
- Limited Lifetime Architectural
Shingles

Kitchen

- 30” Smooth Top S/S Range
- 25 CF Side by Side Refrigerator S/S
w/Icemaker
- S/S Dishwasher
- S/S Spacesaver Microwave
- Stainless Steel FarmHouse Style
Sink
- Laminate Countertop w/ Full
Ceramic Backsplash & Ideal Edging
- 30” Overhead Cabinets w/Matching
Cove Molding
- Shaker Style Cabinets (Colors-
White, Gray, Espresso)
- Kitchen Island White Shaker Style
Cabinets with Beadboard
- Double Trash Can Base Cabinet in
Island (Per Plan)
- Pot and Pan Drawer Base Cabinet
in Island (Per Plan)
- Raised Wall Cabinet over Range

Flooring

- 25 oz. Carpet w/ Pad & Tack Strip
(Shipped Loose)
- 6 lb. Re-Bond carpet Pad
- Congoleum Flooring in
Designated Areas (Per Plan)

Interior Appointments

- 1/2” High Strength Sheetrock
Ceilings w/Smooth Finish
- (2 X 4) Interior Wall Construction
- 2 Panel Cashel Interior Doors
- Mortised Door Hinges
- 3 1/2” Crown Molding
- 6” Baseboard Molding
- 2 1/4” Window/Door Casing
- Metal Shelf over Washer/Dryer
- Finished ½” Sheetrock Thru-out
- Lever Interior Door Hardware
- Shoe Rack with Shirt & Skirt
Shelves in Master Bedroom Closet
(Per Plan)
- Laminate Top Table in Utility (Per
Plan)
- 36” Interior Doors M/Bedroom, MBR
Closet & M/Bath

Electrical

- Surface Mount LED Can Light
Ceiling Fixtures T/O Including
Bedrooms
- Bronze Exterior Light @ Frt. Door
- Exterior Electrical Outlets (@ Exterior
Doors)
- 200 AMP Panel Box
- Smoke Detector Systems
- Dryer Hook-up with recessed
exhaust box
- Ceiling Fans (3 @ STD Locations
Per Plan. All bedrooms braced
junction box for ceiling fan.)
- 110V Outlet Receptacle in Utility
Room Storage Closet (Per Plan)
- 1 ¼” Conduit Running Down from
Electrical Panel Box for Future Use

Available Options Per Plan

- 130 MPH Wind Zone
- 7/12 Roof Pitch 24” OC
- Saddle Roof Option

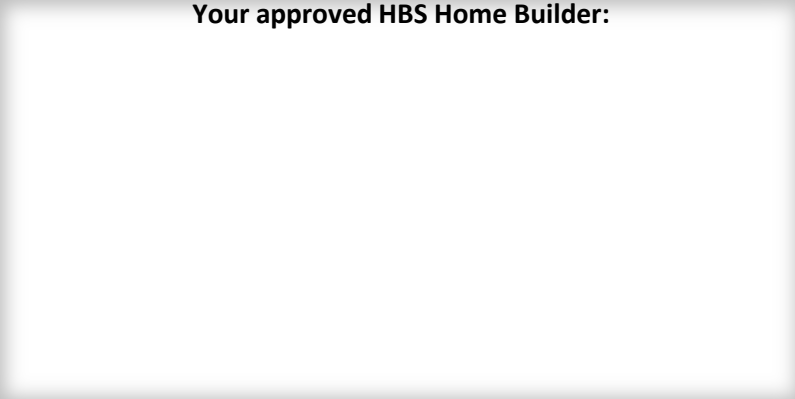
- Sliding Glass Door(s)
- Vent-less Gas Fireplace w/ TV
Niche Bookcase Cabinetry
- (2) Pendant lights w/ Separate
Switch over Kitchen Island
- Congoleum Vinyl Floor ILO
Carpet in Family Room
- Vinyl Plank Flooring

- Alternate Kitchen Plan
- Black Stainless-Steel Appliance
Package including Trio
Refrigerator
- Alternate Master Bath Plan
- 9’ Ceiling Height with 36” Tall
Kitchen Wall Cabinets





Your approved HBS Home Builder:



Building A Better Home...

Holmes Building Systems, LLC. 2863 Old Plank Rd. Robbins, NC 27325
www.HBS home.com